

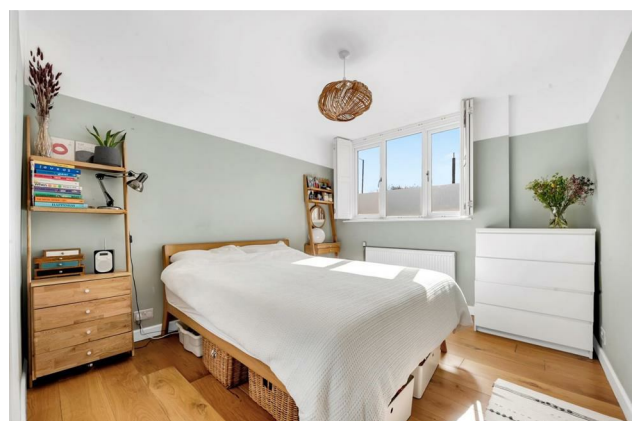
HUNTERS®

HERE TO GET *you* THERE

Lordship Park, London, N16

Price £500,000

Property Images



HUNTERS[®]

HERE TO GET *you* THERE

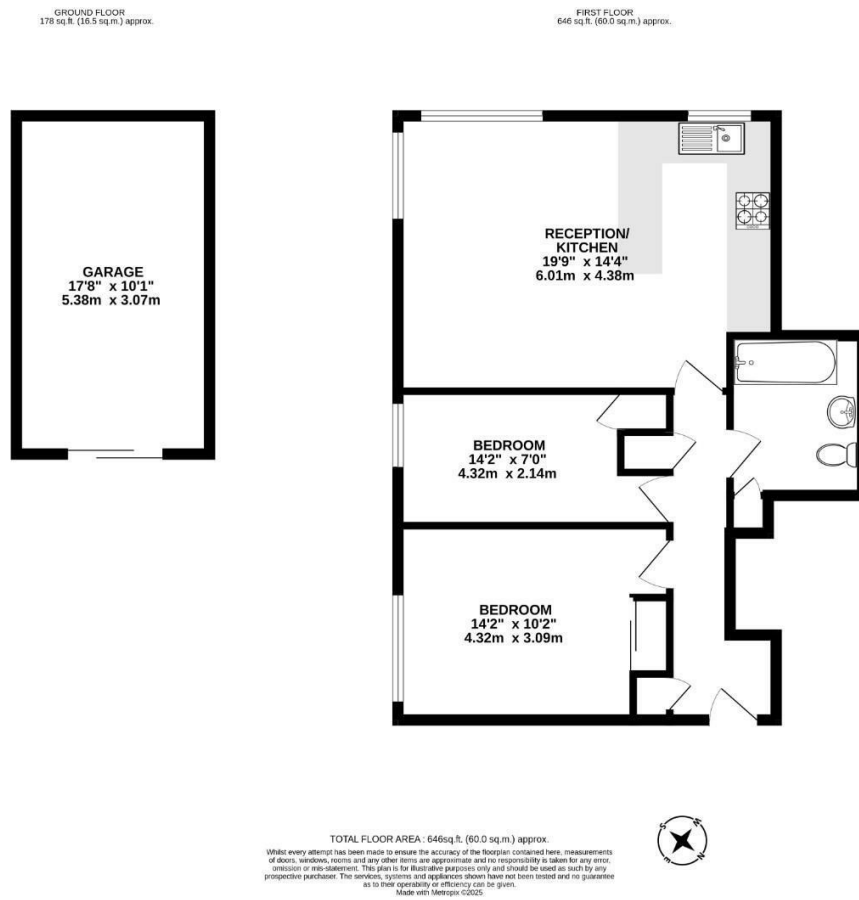
Property Images



HUNTERS®

HERE TO GET *you* THERE

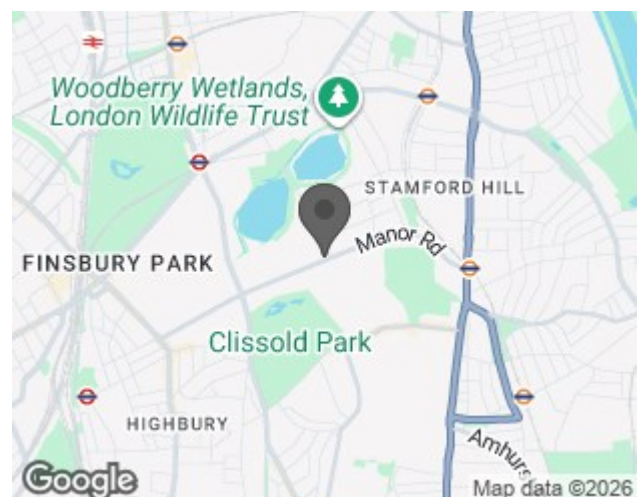
Floorplan



EPC

Energy Efficiency Rating		
	Current	Potential
Very energy efficient - lower running costs		
(92 plus) A		
(81-91) B		
(69-80) C	77	80
(55-68) D		
(39-54) E		
(21-38) F		
(1-20) G		
Not energy efficient - higher running costs		
England & Wales	EU Directive 2002/91/EC	

Map



Details

Type: Apartment Beds: 2 Bathrooms: 1 Receptions: 1 Tenure: Share of Freehold

Summary

A beautifully presented two-bedroom first floor apartment with share of freehold, set within the sought-after Brookgate development on Lordship Park, N16.

The flat offers approximately 646 sq ft (60 sq m) of bright and well-planned accommodation, including a superb dual aspect open-plan kitchen and reception room with wood flooring. The modern kitchen is fitted with sleek white units, wood worktops, metro tiling and integrated appliances, creating a stylish hub for both cooking and entertaining.

There are two bedrooms, including a generous principal bedroom with built-in storage, and a second room that works equally well as a guest bedroom, nursery or home office. The contemporary bathroom has been finished with white tiling, a rainfall shower over the bath and patterned tiled flooring.

Further benefits include double glazed windows throughout, well-kept communal gardens, and a private garage to the rear.

Brookgate occupies a prominent position on Lordship Park, close to the green open spaces of Clissold Park and Stoke Newington's vibrant Church Street, with its independent shops, cafés, restaurants and pubs. Excellent transport links are nearby at Manor House Underground (Piccadilly Line) and Stoke Newington Overground, together with numerous local bus routes providing swift access across London.

Features

- Two bedroom apartment • First floor • Garage • Open plan • Excellent condition throughout • Communal garden • Close to Church Street • Close to Clissold Park